

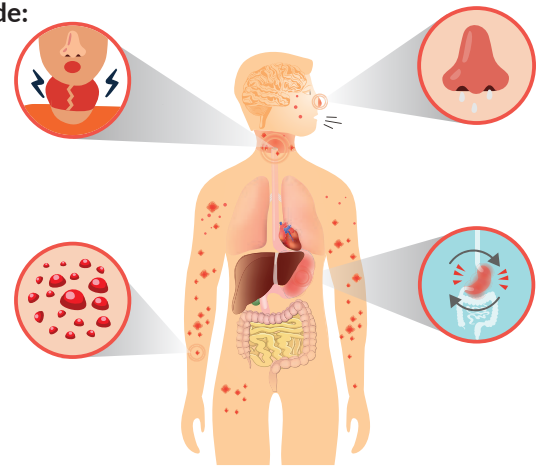
NUT ZOOMER



Which Patients Need the Vibrant Nut Zoomer?

Conditions and symptoms associated with tree nut sensitivities include:

- ❑ Abdominal pain and cramps
- ❑ Bloating
- ❑ Migraines
- ❑ Headaches
- ❑ Cough
- ❑ Diarrhea
- ❑ Nasal congestion or a runny nose
- ❑ Nausea
- ❑ Irritable bowel
- ❑ Hives



Facts About Tree Nuts

- ✔ Tree Nuts are considered a highly antigenic food and are one of the **8 major allergens**
- ✔ Individuals who are sensitive to tree nuts should also avoid peanuts because of the risk of cross-contact and cross-contamination between tree nuts and peanuts in food processing facilities
- ✔ Tree nut & peanut allergies in children have tripled from **1997 to 2008**¹



1(866) 364-0963
support@vibrant-wellness.com



www.vibrant-wellness.com



1360 Bayport Ave. Ste. B
San Carlos, CA 94070



VibrantWellness



Clinical Connections



Delayed sensitivities to peptides in tree nuts can present up to 72 hours after consuming tree nut products. These sensitivities are based on IgG & IgA antibody-driven reactions and can affect both the local intestinal environment with acute symptoms, as well as the extra-intestinal systems from the skin, to the joints, brain, and other internal organs and tissue systems.



Nut sensitivities are more common in people with a history of peanut sensitivity. Even though peanuts are considered legumes not nuts, people with peanut sensitivity or allergy are often advised to avoid all nuts because of potential risk of cross contamination. But most people who are sensitive to one tree nut are not sensitive to all tree nuts. So, if you are looking to go a step further to identify the specific nut variety you are sensitive to, Vibrant Nut Zoomer with peanut Zoomer is a great way to get a more comprehensive assessment of your nut sensitivity.



What Does the Vibrant Nut Zoomer Test Include?

Almond

Protein Family	Antigens
PR-10 family	Pru du 1
PR-5 family	Pru du 2
prolamin family	Pru du 3
profilin family	Pru du 4
60S acidic ribosomal protein P2 family	Pru du 5
cupin family	Pru du 6

Cashew

Protein Family	Antigens
vicilin-like 7s globulin protein	Ana o 1
11s globulin protein	Ana o 2
2s albumin protein	Ana o 3

Brazil Nut

Protein Family	Antigens
2s albumin protein family	Ber e 1
11S globulin protein	Ber e 2

Walnut

Protein Family	Antigens
prolamin superfamily	Jug n 1 Jug r 1 Jug r 3
cupin superfamily	Jug n 2 Jug r 2 Jug r 4
11S globulin protein	Jug n 4
Profilins family	Jug r 5 Jug r 7
vicilin protein	Jug r 6

Reference:

1. *J Allergy Clin Immunol.* 2010 Jun;125(6):1322-6. doi: 10.1016/j.jaci.2010.03.029. Epub 2010 May 11.

Regulatory Statement

The general wellness test intended uses relate to sustaining or offering general improvement to functions associated with a general state of health while making reference to diseases or conditions. This test has been laboratory developed and its performance characteristics determined by Vibrant America LLC and Vibrant Genomics, CLIA and CAP certified laboratory performing the test. The test has not been cleared or approved by the U.S. Food and Drug Administration (FDA). Although FDA does not currently clear or approve laboratory-developed tests in the U.S., certification of the laboratory is required under CLIA to ensure the quality and validity of the tests.